

# HORST 1400

HORST 1400 is the ideal robotic solution for a wide variety of industrial automation tasks in logistics, handling plastic, wood or metal parts with an extended operating range. Robust, strong, but highly accurate, HORST 1400 provides high performances in all sectors and applications, handling payloads of up to 12 kg with high repeat accuracy.



## Highlights

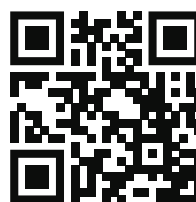
- 1425 mm maximum range.
- Up to 12 kg payload.
- $\pm 0.1$  mm repeatability.

## Main features

Number of axes	6
Maximum payload	12 kg <sup>1</sup>
Nominal load	8 kg
Maximum range	1425 mm
Repeatability	$\pm 0.1$ mm
Protection	IP54
Weight	ca. 150 kg
Installation area	474 x 474 mm
Power supply	230 VAC, 50-60 Hz, 850 W/1000 W

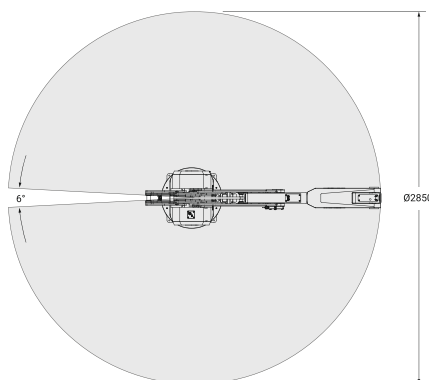
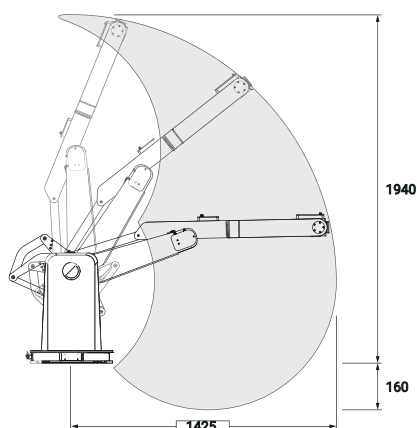
## Axis data

Axis	Range of movement	Speed <sup>2</sup>
1	$\pm 177^\circ$	175°/s
2	$-13^\circ/+85^\circ$	50°/s
3	$-59^\circ/+54^\circ$	100°/s
4	$\pm 171^\circ$	850°/s
5	$\pm 117^\circ$	780°/s
6	$\pm 300^\circ$	1050°/s

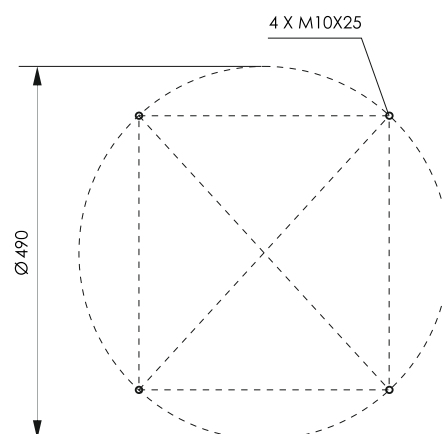


ACCESS HERE FURTHER  
TECHNICAL INFORMATION

## Operating Range



## Drilling pattern



# User Interface

HorstFX allows to easily create industrial robot programs without having to write textual codes.

The intuitive graphic interface with touch screen operating panel and for touch screens in general, but it also works on desktop for maximum flexibility.



## Horst 1400 includes

- Switch cabinet
- Robot control touch panel
- HorstFX software

## Control and interfaces horstCONTROL

Dimensions (H x B x T)	313 mm x 174 mm x 446 mm
I/O connections on switch cabinet	20 digital input (expandable to 28) 18 digital output (expandable to 30)
I/O connections on tool flange	M8 male, 4-pin, angled, A-coded
I/O power supply	24V/7A at control 24V/2.5A at tool flange
Communication	TCP/IP 100-Mbit/s Ethernet [Web-Interface via HTTP]
Safety-relevant interfaces	Emergency stop [input and output]; Safety stop [input and output] in accordance with DIN EN ISO 10218-1
Fieldbus	Modbus/TCP Optional: Profinet

## Upstream communication possibilities

Modbus TCP/IP via Ethernet port



TCP/IP Sockets via Ethernet port



## Mobile robot base (available upon request)

A versatile multi-purpose platform equipped with emergency stop button, mounts for cabinet and panel and lockable door.

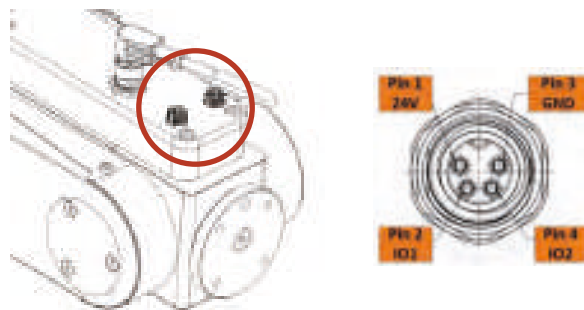
The aluminium base has multiple drilling patterns.



## Tool connectivity

Each interface provides power and control signals for grippers and sensors.

- 2 digital inputs/outputs
- 24 VDC current



Electric grippers    No pneumatics    Easy maintenance

## Tool mounting Flange

