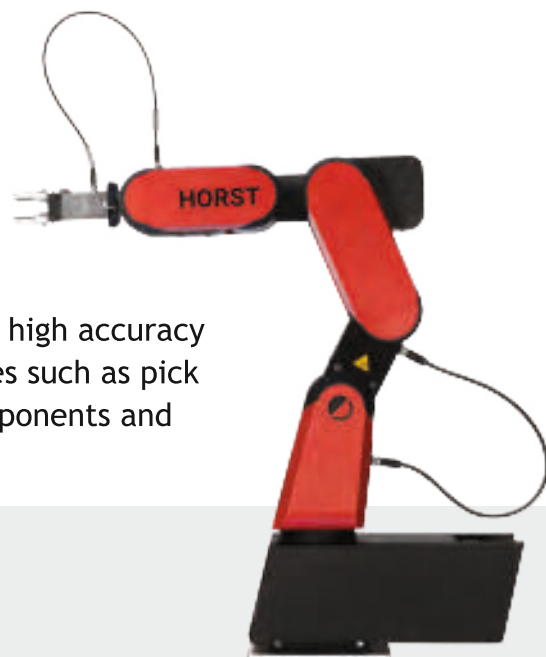


HORST 600

Horst 600 Fast is a compact and lightweight 6 axis industrial robot, operating at high speed with top precision.

The small space requirements and the extremely high accuracy make it very appealing for short production cycles such as pick and place, handling and assembling of small components and precise positioning in general.



Highlights

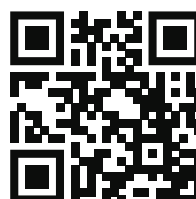
- 584 mm maximum range.
- Up to 3 kg payload.
- +/- 0.05 mm repeatability.

Main features

Number of axes	6
Maximum payload	3 kg ¹
Nominal load	2 kg
Maximum range	584 mm
Repeatability	+/- 0.05 mm
Protection	IP54
Weight	ca. 29 kg
Installation area	382 x 200 mm
Power supply	230 VAC, 50-60 Hz, 450 W/600 W

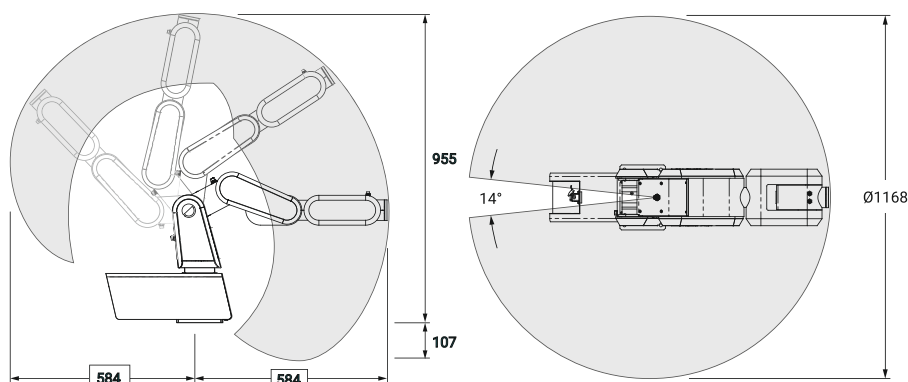
Axis data

Axis	Stroke	Max Speed
1	+/-173°	370°/s
2	- 64°/+115°	140°/s
3	- 176°/+41°	420°/s
4	+/-172°	1220°/s
5	+/-142°	940°/s
6	+/-300°	1280°/s

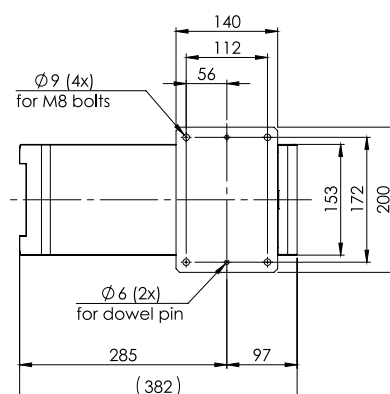


ACCESS HERE FURTHER
TECHNICAL INFORMATION

Operating Range



Drilling pattern



User Interface

HorstFX allows to easily create industrial robot programs without having to write textual codes.

The intuitive graphic interface has been developed for the included operating panel with touch screen, but it also works on desktop for maximum flexibility.



Horst 600 includes

- Switch cabinet
- Robot control touch panel
- HorstFX software

Control and interfaces horstCONTROL

Dimensions (H x B x T)	313 mm x 174 mm x 446 mm
I/O connections on switch cabinet	20 digital input (expandable to 28) 18 digital output (expandable to 30)
I/O connections on tool flange	M8 male, 4-pin, angled, A-coded
I/O power supply	24V/7A at control 24V/2.5A at tool flange
Communication	TCP/IP 100-Mbit/s Ethernet [Web-Interface via HTTP]
Safety-relevant interfaces	Emergency stop [input and output]; Safety stop [input and output] in accordance with DIN EN ISO 10218-1
Fieldbus	Modbus/TCP Optional: Profinet

Upstream communication possibilities

Modbus TCP/IP via Ethernet port



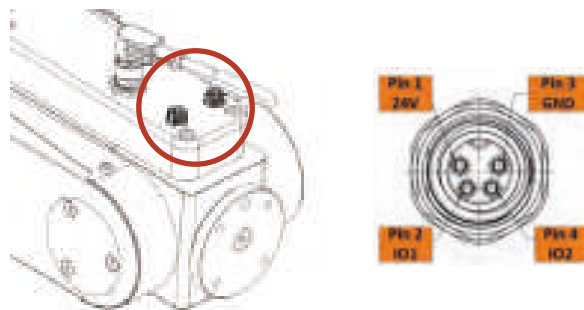
TCP/IP Sockets via Ethernet port



Tool connectivity

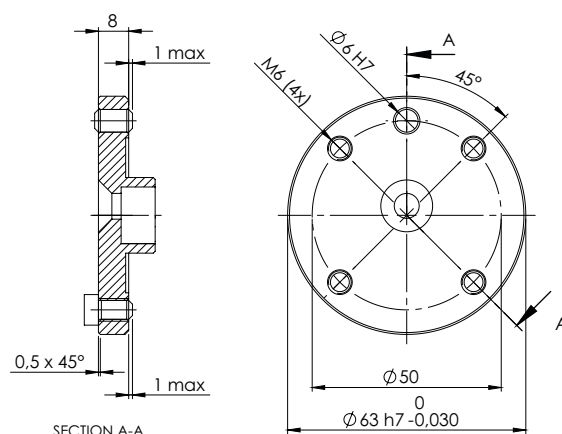
Each interface provides power and control signals for grippers and sensors.

- 2 digital inputs/outputs
- 24 VDC current



Electric grippers No pneumatics Easy maintenance

Tool mounting Flange



Mobile robot base (available upon request)

A versatile multi-purpose platform equipped with emergency stop button, mounts for cabinet and panel and lockable door.

The aluminium base has multiple drilling patterns.

