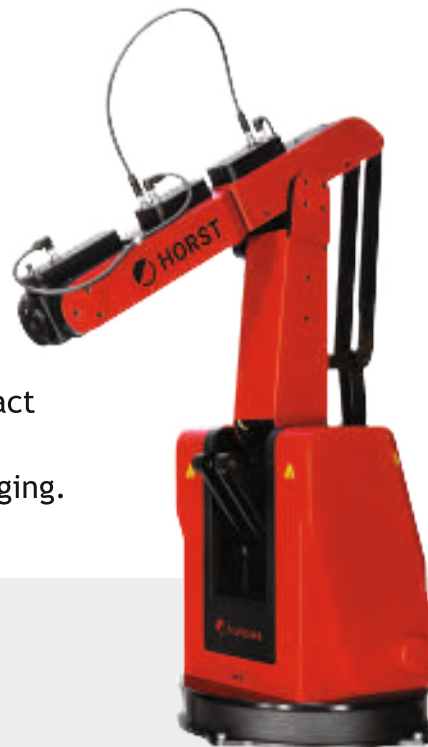


# HORST 900

Horst 900 is a 6 axis industrial robot carachterized by particularly high working speeds for its size. It offers an optimum ratio of range and payload, quickly handling loads of up to 5 kilograms in a compact working area. Its ideal application fields are fitting, assembling, screwing, palletizing, stacking and packaging.



## Highlights

- 905 mm maximum range.
- Up to 5 kg payload.
- +/- 0.05 mm repeatability.

## Main features

Number of axes	6
Maximum payload	5 kg <sup>1</sup>
Nominal load	3 kg
Maximum range	905 mm
Repeatability	+/- 0.05 mm
Protection	IP54
Weight	ca. 55 kg
Installation area	380 x 380 mm
Power supply	230 VAC, 50-60 Hz, 650 W/800 W

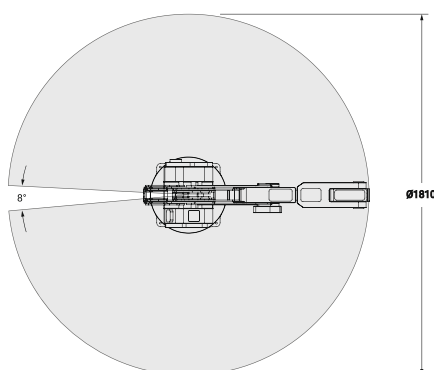
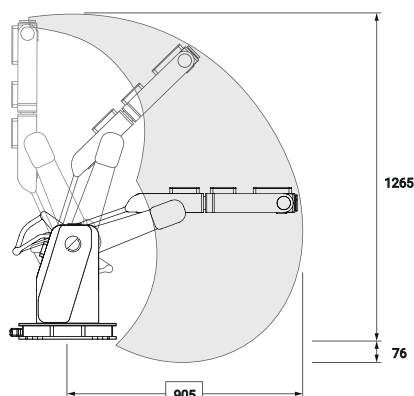
## Axis data

Axis	Stroke	Max Speed
1	±176°	280°/s
2	-16°/+86.5°	150°/s
3	-67°/+ 42°	300°/s
4	±171°	900°/s
5	±119°	750°/s
6	±300°	1150°/s

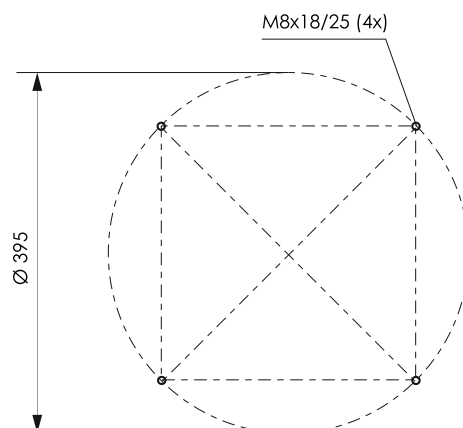


ACCESS HERE FURTHER  
TECHNICAL INFORMATION

## Operating Range



## Drilling pattern



## User Interface

HorstFX allows to easily create industrial robot programs without having to write textual codes.

The included operating panel with touch screen, but it also works on desktop for maximum flexibility.



## Horst 900 includes

- Switch cabine
- Robot control touch panel
- HorstFX software

## Control and interfaces horstCONTROL

Dimensions (H x B x T)	313 mm x 174 mm x 446 mm
I/O connections on switch cabinet	20 digital input (expandable to 28) 18 digital output (expandable to 30)
I/O connections on tool flange	M8 male, 4-pin, angled, A-coded
I/O power supply	24V/7A at control 24V/2.5A at tool flange
Communication	TCP/IP 100-Mbit/s Ethernet [Web-Interface via HTTP]
Safety-relevant interfaces	Emergency stop [input and output]; Safety stop [input and output] in accordance with DIN EN ISO 10218-1
Fieldbus	Modbus/TCP Optional: Profinet

## Upstream communication possibilities

Modbus TCP/IP via Ethernet port



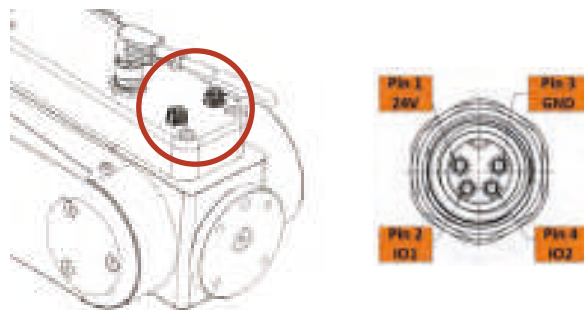
TCP/IP Sockets via Ethernet port



## Tool connectivity

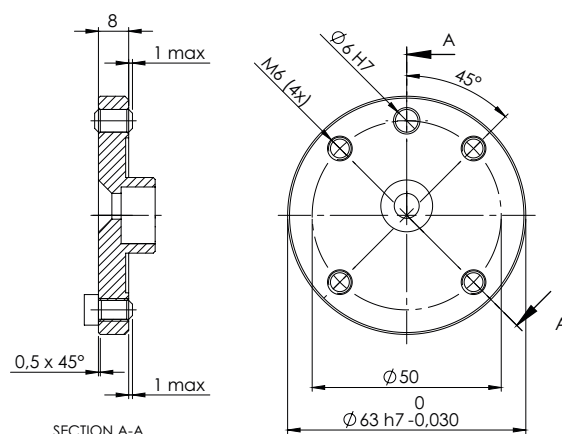
Each interface provides power and control signals for grippers and sensors.

- 2 digital inputs/outputs
- 24 VDC current



Electric grippers    No pneumatics    Easy maintenance

## Tool mounting Flange



## Mobile robot base (available upon request)

A versatile multi-purpose platform equipped with emergency stop button, mounts for cabinet and panel and lockable door.

The aluminium base has multiple drilling patterns.

