

RX6-700

RX6-700 is a robust high-cycle SCARA robot with arm length 700mm and 6kg maximum payload. It is perfect for applications requiring high speed and a wider operating area.



Highlights

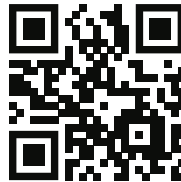
- 700 mm maximum range
- Up to 6 Kg Payload
- 7403 mm/s complex speed

Main features

Number of axes	4
Maximum payload	6 kg
Nominal load	2 kg
Maximum range	700 mm
Protection	IP20
Weight	19 kg
Installation area	195x169 mm
Power supply	230 VAC, 50-60 Hz, 800 W

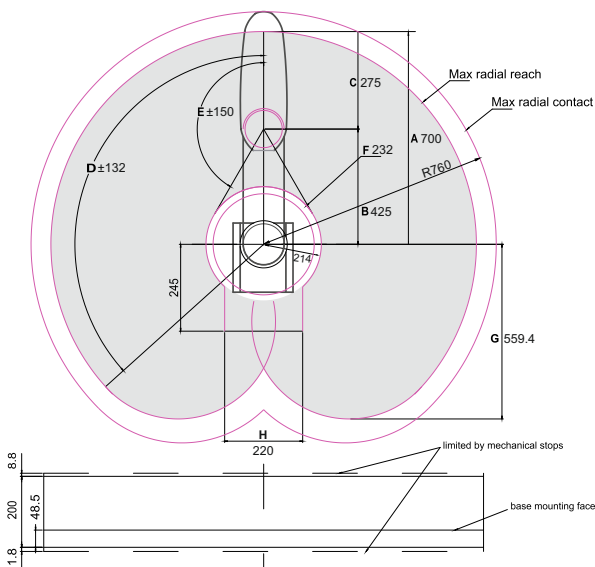
Axis data

Axis	Stroke	Max Speed	Repeatability	
1	$\pm 132^{\circ}$	5900 mm/s	± 0.025 mm	Axes 1,2
2	$\pm 150^{\circ}$			
3	0~200 mm	1000 mm/s	± 0.015 mm	Axis 3
4	$\pm 360^{\circ}$	1730 $^{\circ}$ /s	$\pm 0.01^{\circ}$	Axis 4



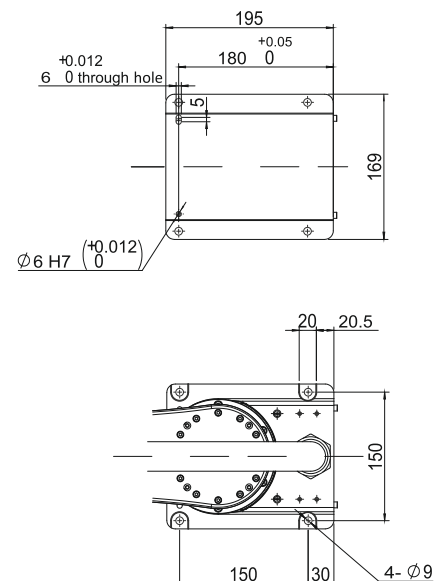
**ACCESS HERE FURTHER
TECHNICAL INFORMATION**

Operating Range



- | | |
|---|-------------------------------|
| A | Lenght-Arm #1 & Arm#2 (mm) |
| B | Lenght-Arm #1 (mm) |
| C | Lenght-Arm #2 (mm) |
| D | Motion range-Joint #1 (°) |
| E | Motion range-Joint #2 (°) |
| F | Motion range (mm) |
| G | Motion range of backside (mm) |
| H | Motion range (mm) |

Drilling Pattern



Integration efficiency

Full integration with a selection of EtherCAT TRIO MOTION controllers, synchronizing multiple machine and robot axes within the native Trio software environment. The Controller has integrated robot path planning and can be programmed to control **more of the machine solution and integrate machine elements, including additional axes**. Such a coordinated system simplifies the programming and maximizes performances.



Upstream Communication Possibilities

Modbus TCP/IP Via Ethernet Port



TCP/IP Sockets Via Ethernet Port



EtherCAT®

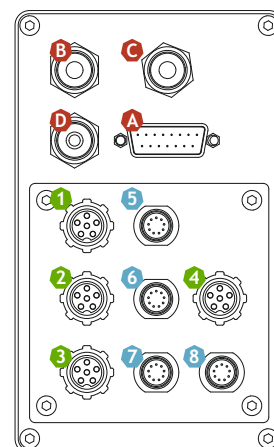
TRIO
MOTION TECHNOLOGY

Motion Perfect

Connectivity

The RX6-700 SCARA gives the possibility to connect compressed air systems and electrical power via a 15 pin D-SUB connector for pneumatic and electrical end.

- | | |
|--|--|
| A 15 pin D-SUB Electric Connector | 1-4 Power cable |
| B 6 mm Pneumatic Connector | 5-8 Encoder cable (brake for J3+J4) |
| C 6 mm Pneumatic Connector | |
| D 4 mm Pneumatic Connector | |



Mechanical Dimension

