

# RX6-600

The RX6-600 SCARA robot features a maximum operating range of 600 mm and up to 6 kg payload. Sitting in a small footprint, it offers high performance and reliability where precision and speed are required.



## Highlights

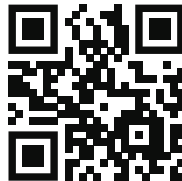
- 600 mm maximum range
- Up to 6 Kg Payload
- 7403 mm/s complex speed

## Main features

Number of axes	4
Maximum payload	6 kg
Nominal load	2 kg
Maximum range	600 mm
Protection	IP20
Weight	18 kg
Installation area	195x169 mm
Power supply	230 VAC, 50-60 Hz, 800 W

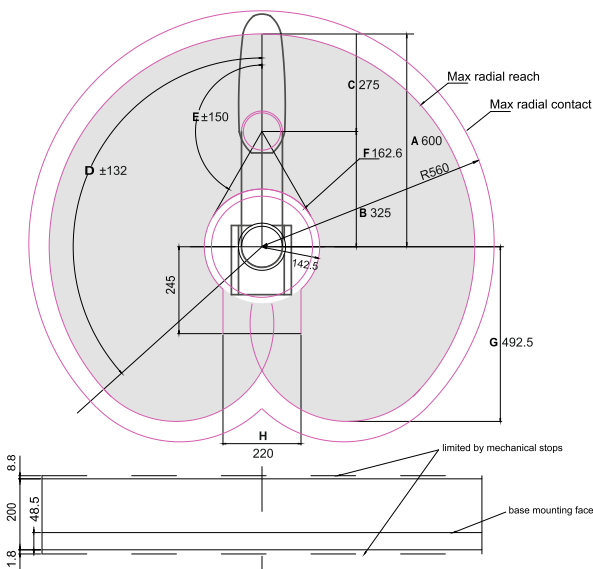
## Axis data

Axis	Stroke	Max Speed	Repeatability
1	$\pm 132^\circ$	$375^\circ/\text{s}$	$\pm 0.025 \text{ mm}$ Axis 1,2
2	$\pm 150^\circ$	$588^\circ/\text{s}$	
3	0~200 mm	1100 mm/s	$\pm 0.015 \text{ mm}$ Axis 3
4	$\pm 360^\circ$	$2000^\circ/\text{s}$	$\pm 0.01^\circ$ Axis 4



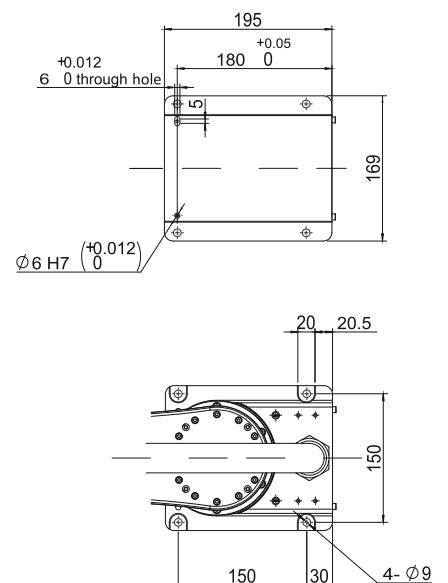
ACCESS HERE FURTHER  
TECHNICAL INFORMATION

## Operating Range



- A Length-Arm #1 & Arm#2 (mm)
- B Length-Arm #1 (mm)
- C Length-Arm #2 (mm)
- D Motion range-Joint #1 ( $^\circ$ )
- E Motion range-Joint #2 ( $^\circ$ )
- F Motion range (mm)
- G Motion range of backside (mm)
- H Motion range (mm)

## Drilling Pattern



## Integration efficiency

Full integration with a selection of EtherCAT TRIO MOTION controllers, synchronizing multiple machine and robot axes within the native Trio software environment. The Controller has integrated robot path planning and can be programmed to control **more of the machine solution and integrate machine elements, including additional axes**

Such a coordinated system simplifies the programming and maximizes performances.



## Upstream Communication Possibilities

Modbus TCP/IP Via Ethernet Port



TCP/IP Sockets Via Ethernet Port



EtherCAT®

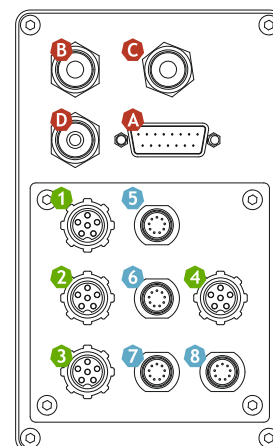
TRIO  
MOTION TECHNOLOGY

Motion Perfect

## Connectivity

The RX6-600 SCARA gives the possibility to connect compressed air systems and electrical power via a 15 pin D-SUB connector for pneumatic and electrical end.

- |  |                         |
|--|-------------------------|
| <b>A</b> 15 pin D-SUB Electric Connector | <b>1-4</b> Power I/Os   |
| <b>B</b> 6 mm Pneumatic Connector        | <b>5-8</b> Encoder I/Os |
| <b>C</b> 6 mm Pneumatic Connector        |                         |
| <b>D</b> 4 mm Pneumatic Connector        |                         |



## Mechanical Dimension

